

# **MiniCart Sound Cart** SC-GREEN

**Owner's Manual**

#### **Legal Notices**

This document is protected under copyright law. Owner's of this product may reproduce this publication for their own personal use. This document may not be reproduced or distributed, in whole or in part, for commercial purposes (which includes selling copies).

Great care has been taken in preparing this document for publication, however since product specifications are subject to change, this document may contain omissions and technical or typographical inaccuracies. The information provided in this manual only serves general information purposes, it may be subject to change at any time without prior notice to improve reliability, function, design or otherwise.

#### **Governing Law**

This agreement and limited warranty are governed by the laws of the United Kingdom.

### **WARNING!**

**THE MINICART SOUND CART IS MADE OF METAL AND IS THEREFORE ELECTRICALLY CONDUCTIVE. DO NOT USE THIS CART NEAR OVERHEAD POWER LINES OR OPEN ELECTRICAL EQUIPMENT.**

**DO NOT ALLOW ANY PART OF THE CART OR ATTACHED ACCESSORIES (INCLUDING ANTENNAS OR BOOM POLES) TO MAKE CONTACT WITH ANY FORM OF ELECTRICAL POWER SUCH AS LIGHTING EQUIPMENT OR OTHER ELECTRICAL HAZARDS.**

### **IMPORTANT!**

**PLEASE ENSURE YOU HAVE READ AND UNDERSTOOD THIS ENTIRE OWNER'S MANUAL BEFORE ATTEMPTING TO ASSEMBLE AND/OR USE THE MINICART SOUND CART.**

# Table of Contents

Introduction .....	4
Unpacking .....	5
Assembly .....	7
Maintenance .....	10
Specifications .....	10
Installing Accessories .....	10
Model Specific Accessories .....	11
Sliding Shelf .....	11
3" Caster Wheels .....	11
1u 19" Adapter Kit .....	11
2u 19" Adapter Kit .....	11
3u 19" Adapter Kit.....	11
100mm 1u Half-rack Shelf .....	11
185mm 1u Half-rack Shelf .....	12
280mm 1u Half-rack Shelf .....	12
8-way 1u Patch Bay .....	12
16-way 2u Patch Bay .....	12
2u Vented Panel .....	12
3u Vented Panel .....	12
Universal Accessories .....	13
Boom Pole Holder Kit .....	13
Antenna Holder Kit .....	13
Cup Holder Kit .....	13
Headphone Holder Kit .....	13
Cable Holder Kit .....	13
Script Holder Kit .....	13
Tablet Holder Kit .....	14
Mounting Point Kit .....	14
Troubleshooting .....	15
Warranty .....	16
Technical Support .....	16

# Introduction

Thank you for purchasing the MiniCart Sound Cart. Its light-weight compact design is the result of extensive research and development, as well as field testing by industry professionals like yourself.

The MiniCart has been designed to hold and transport audio/video equipment used on broadcast television & film sets. Its standard features include a light-weight aluminium frame, height-adjustable rear handle, 20u half-rack strips, 300mm (12") pneumatic rear wheels, adjustable front feet as well as a height-adjustable shelf.



A selection of optional model-specific accessories are available for non-factory installation. These include a Sliding Shelf, 1u-3u 19" Rack Ear Kits as well as Mounting Bars and 3" Front Caster Wheels. A selection of universal accessories are also available including a Headphone Holder, Script/Tablet Mount and Cup Holder. Details of the complete range are available on our website at [www.soundcart.audio](http://www.soundcart.audio).

Customisation was a core design feature of the MiniCart as our research showed that no two Sound Mixers will rig their cart in the same way - even when using broadly the same equipment! As such, you can configure the MiniCart in an endless number of ways thus enabling you to make your cart as individual as you are.

# Unpacking

Your MiniCart was hand-built before being partially dismantled prior to dispatch. We understand that you'll be eager to unpack and use your cart, however, we recommend carefully opening the box as well as taking a moment to familiarise yourself with all the parts.

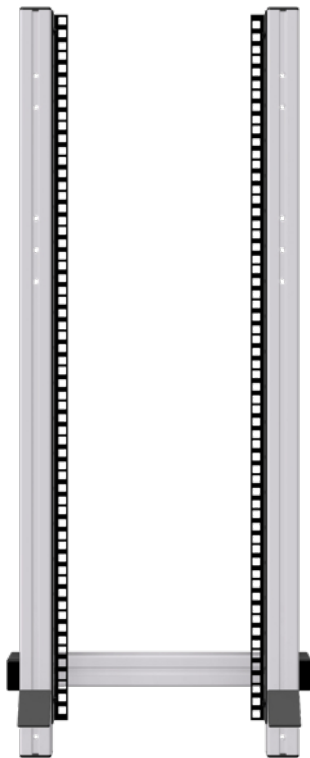
## Packing List

The MiniCart ships with the items listed below. If *any* of these items are not present in the box when you first open it, please contact your dealer immediately or email us directly at [support@soundcart.audio](mailto:support@soundcart.audio).

**1x**

### Frame

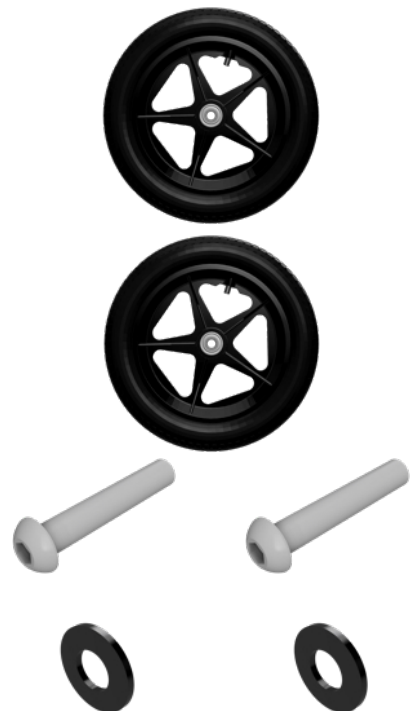
2x FRAME UPRIGHTS WITH 20U RACK STRIPS,  
2x TRIANGULAR BRACKETS, 1x AXLE



**2x**

### 300mm (12") Wheels

2x 300mm (12") WHEELS, 2x M12 x 70mm  
BOLTS, 2x M12 WASHERS



**1x**

### Rear Handle

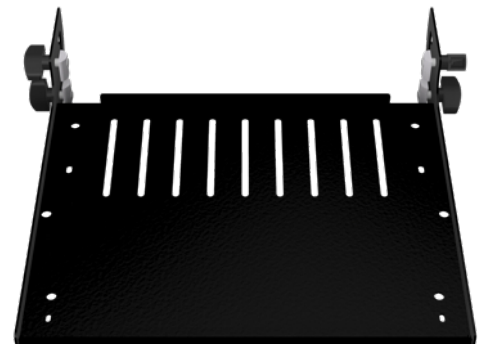
1x ALUMINIUM HANDLE WITH GREEN HANDLE  
ARMS & RUBBER WHEELS. 4x M8 x 16mm  
BOLTS, 2x M8 DOUBLE T-SLOT NUTS



**1x**

### Low Profile Shelf

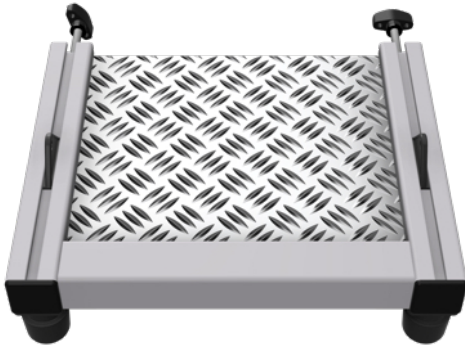
1x LOW PROFILE SHELF, 4x M8 x 16mm HAND  
CLAMPS, 4x M8 WASHERS, 4x M8 T-SLOT NUTS



**1x**

**Base Platform**

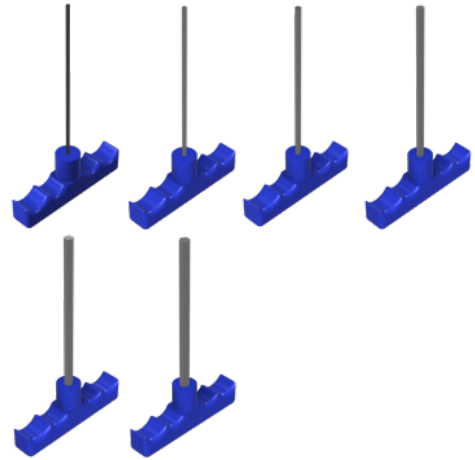
1x U-SHAPED FRAME, 1x BLACK PANEL INSERT,  
1x TREAD PLATE PANEL INSERT, 2x TRIANGULAR  
INSERTS, 2x ADJUSTABLE FEET, 2x M8 x50mm  
HAND CLAMPS, 2x M8 WASHERS



**6x**

**T-Handle HEX Tools**

1x 2.5mm, 1x 3mm, 1x 4mm, 1x 5mm,  
1x 6mm, 1x 8mm



**2x**

**Bungee Chords**



**4x**

**Cage Nuts**

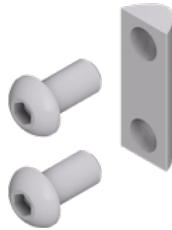
4x M6 SCREWS WITH WASHERS & CAGE NUTS



Assembly can now begin.

# Assembly

1. Remove the four M8 x 16mm bolts from the double t-slot nut installed at the top of each *Frame Upright* using the 5mm HEX Tool supplied.



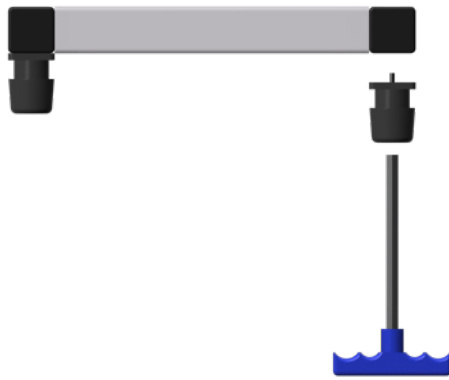
2. Stand the *Frame* and attach the *Rear Handle* using the four M8 x 16mm bolts using the 5mm HEX Tool.



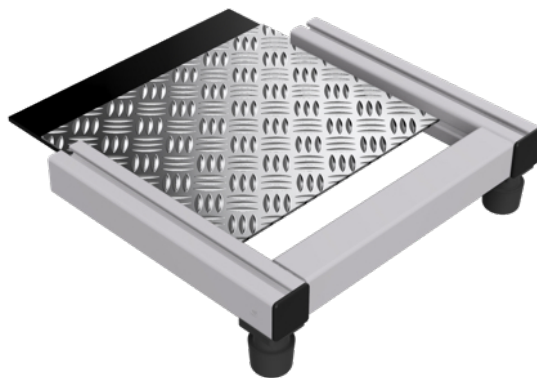
3. Rest the cart on its back and attach the rear wheels. This is achieved by screwing the M12 x 70mm bolts through the hub of each 300mm (12") *Wheel* followed by the M12 washer into the *Axle* using the 8mm HEX Tool supplied.



4. Attach the *Adjustable Feet* to the *Base Platform* by tightening the bolt of each *Adjustable Foot* into one of the M8 t-slot nuts on the underside of the *Base* using the 5mm HEX Tool. The height can be adjusted as required (the standard setting is 50mm) by twisting clockwise/anticlockwise.



5. Slide in the *Black Panel Insert* and *Tread Plate Panel Insert* to the *Base Platform*.



6. Slide in the black *Triangular Inserts* to the channels of the *Base Platform*.

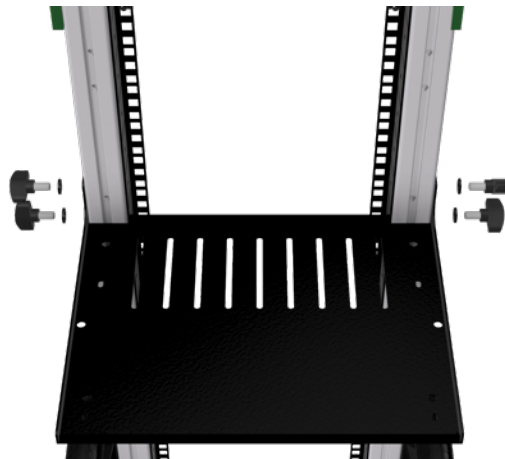


7. Secure the *Base Platform* to the bottom of the *Frame Uprights* using the two M8 x 50mm hand clamps and M8 washers.





8. With the cart stood upright, attach the *Low Profile Shelf* using the four hand clamps and adjust the height as required.



Finally, check that all bolts are fully tightened. **You're ready to go!**



# Maintenance

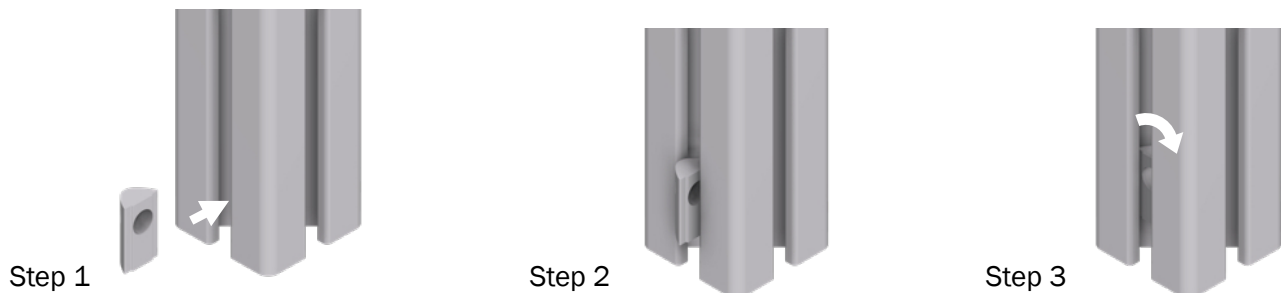
To ensure your cart remains in tip top condition, we recommends that you periodically check and tighten all of the bolts (both visible and concealed using the supplied T-handle HEX tools) as well as grease any casters.

## Specifications

Minimum Height:	995mm
Maximum Height:	1070mm
Width:	500mm
Depth:	475mm
Weight:	12.5kg
Maximum Recommended Load:	30kg

## Installing Accessories

We offer a range of model specific accessories for the MiniCart. Many of our accesess can be positioned on any profile of the cart frame thanks to the use of t-slot nuts which are inserted and secured using the following method:



They can also be removed by reversing these instructions.

# Model Specific Accessories

Below is a selection of the model specific accessories (100% user-installable) available for the MiniCart.

## Sliding Shelf (SC-SSN)

Internal dimensions: 346 x 278mm (W x D)  
Maximum load: 12kg



## 3" Caster Wheels (SC-F3CW)



## 1u 19" Adapter Kit (SC-1URAD)



## 2u 19" Adapter Kit (SC-2URAD)



## 3u 19" Adapter Kit (SC-3URAD)



## 100mm 1u Half-Rack Shelf (SC-1U100)



**185mm 1u Half-Rack Shelf (SC-1U185)**



**280mm 1u Half-Rack Shelf (SC-1U280)**



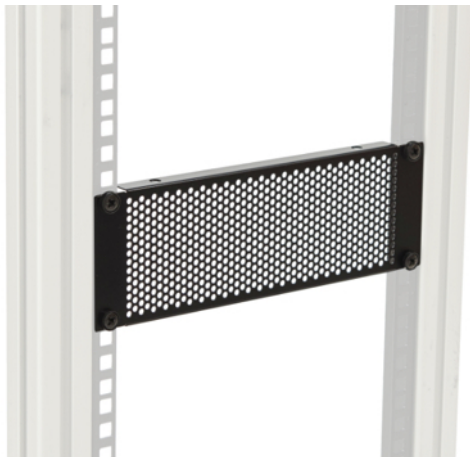
**8-way 1u Patch Bay (SC-1U8P)**



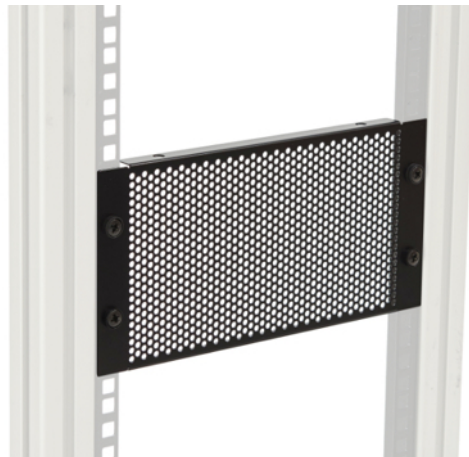
**16-way 2u Patch Bay (SC-2U16P)**



**2u Vented Panel (SC-2UVP)**



**3u Vented Panel (SC-3UVP)**



If there is an accessory you would like for your MiniCart, we'd love to hear from you!

# Universal Accessories

We also offer a wide range of universal accessories that fit our various models. These include:

**Boom Pole Holder Kit (SC-BOOMH)**



**Antenna Holder Kit (SC-ANTH)**



**Cup Holder Kit (SC-CUPH)**



**Headphone Holder Kit (SC-HDPHH)**



**Script Holder Kit (SC-SCRPH)**



**Cable Holder Kit (SC-CBLH)**



**Tablet Holder Kit (SC-TBLTH)**



**Mounting Point Kit (SC-MNTP)**



A complete gallery of our universal accessories is available at [www.soundcart.audio](http://www.soundcart.audio)

# Troubleshooting

Below is a selection of answers to some the commonly asked questions about the MiniCart.

**Question:** **Can I stand and mix?**

**Answer:** Yes absolutely, thanks to its fully height adjustable shelves it is easy to set a comfortable working height to stand and mix at.

**Question:** **Can I purchase more shelves?**

**Answer:** Yes, additional shelves are available to purchase.

**Question:** **What weight can the shelves carry?**

**Answer:** The shelves have been tested to 12kg so will accept even the heaviest of bags.

**Question:** **What accessories are available?**

**Answer:** The majority of our universal accessory range can be added to the MiniCart.

**Question:** **Will there be a waterproof cover be available?**

**Answer:** Yes, a waterproof cover is currently in development.

**Question:** **Do the shelves fold?**

**Answer:** Yes, release the clamps on each side and slide them up or down as desired.

**Question:** **What is the MiniCart made from?**

**Answer:** The MiniCart is predominately made from aluminium extrusion making the cart both light-weight and strong.

# Warranty

SOUNDCART.audio extends a limited one-year parts and labour warranty to all MiniCart Sound Cart owners from the date of original purchase.

SOUNDCART.audio warrants the MiniCart Sound Cart to be free of defective material and workmanship for a period of one year from the original date of purchase and agrees to repair or replace such defective part(s) or the entire product at its option, provided that the equipment is returned to SOUNDCART.audio. Shipping and insurance costs to SOUNDCART.audio must be prepaid by the owner.

This warranty does not cover damage due to accident, abuse or misuse, careless handling, improper connection and/or installation, improper electrical contact or grounding. This warranty does not cover bent or damaged shelves, frame profiles, wheel forks, handles or accessories that have been overloaded with weight beyond their individual design capacity and/or that of the entire cart.

This warranty does not cover damage to powder coated parts caused by lifting the cart via those parts. This warranty will be null and void in the event of service or repair work not performed by SOUNDCART.audio or an authorised agent, failure to properly maintain the cart or continued use after a defect becomes apparent. Proof of purchase date (copy of invoice) must be provided prior to any warranty service or repair work being performed.

This warranty is in lieu of any other warranty, expressed or implied, including warranties without limitation, products being merchantable at the time of purchase or suitable for a particular purpose. This warranty does not extend to, or include consequential damage.

SOUNDCART.audio reserves the right to change the specifications of the MiniCart Sound Cart without any prior notification.

## Technical Support

Please contact us if you have any comments, suggestions or questions about your new cart. Many of our optional accessories have been developed as a direct result of requests from customers like yourself. SOUNDCART.audio can be contacted via:

**Email:** [support@soundcart.audio](mailto:support@soundcart.audio)

**Web:** [www.soundcart.audio](http://www.soundcart.audio)  
[www.facebook.com/soundcart](https://www.facebook.com/soundcart)  
[www.instagram.com/soundcart](https://www.instagram.com/soundcart)

**Registered Address:** Matthew Bacon Limited (Trading as SOUNDCART.audio)  
Registered Office: 59 Victoria Road, Surbiton, Surrey, KT6 4NQ,  
United Kingdom

**Service/Repair Postal Address:** Please contact us to receive a reference number before sending your cart for servicing or repair.